

City of Carmel

WWTP Improvements Secondary Expansion



Total Contract: \$9,884,000
Project Start: December 2019
Project Completion: March 2021



Resourceful.



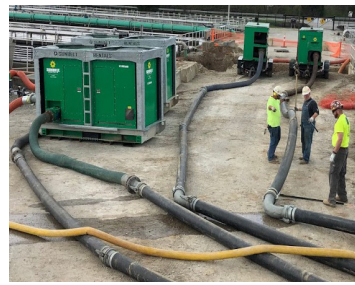
Responsive.



Results.



CARMEL
INDIANA



City of Carmel

WWTP Improvements Secondary Expansion / Carmel, IN
Project Size: \$9,884,000 / December 2019 - March 2021

The City of Carmel needed to increase plant capacity. Scope of work included the addition of (2) Aeration Tanks, a Final Clarifier, RAS Pump Station addition, Diversion Structure addition, Mixed Liquor Channel, process equipment, mechanical pipping, UV Building upgrades, and a new storm drainage system.

Project Challenges

- Inaccurate as-built drawings
- Worked closely with the Owner and Engineer to plan the complicated bypass sequence of work, while keeping plant capacity to a maximum

Bowen Resourceful:

- We were able to use skilled hydrovac services to locate utilities, as well as reference old drawings from the original plant project to help determine where utilities were located.

Bowen Responsive:

- Collaborating with the onsite Engineer representative, we were able to come up with a bypass sequence that accelerated the schedule and kept the plant capacity to a maximum.

Bowen Results:

- Had the opportunity to develop craft for upper management positions and initiated new foremen.

PROJECT SCOPE

- Site Work
- Civil/Concrete Work
- Underground Piping
- Mechanical/Piping
- Equipment Setting
 - RAS Pumps (2)
 - Peripheral Feed Clarifier Equipment (3) 1 New, 2 Retrofit
 - UV Disinfection Equipment
 - Manual and Actuated Stainless Steel Slide Gates (18)
 - Manual and Actuated Valves 6" - 18" (52)
 - Sanitaire Fine Bubble Aeration System (2 new systems with 1600 new pods and 2600 replacement pods for existing tanks)
 - Mixers
 - Sampling Equipment

PROJECT SPECS

- 33,700 CY of Excavation
- 20,800 CY of Backfill
- 2,400 CY of Concrete
- 247 Tons of Rebar
- 48,900 SF of Formwork
- 1,600 LF of UG DIP (30")
- 1,900 LF of PVC/HDPE
- 900 LF of FL DIP (30")

PROJECT TEAM

- Bowen Contact: Mark Cvetkovich / Matt Lash
- Engineering: Jones and Henry Engineers, Ltd.

PROJECT IMAGES



Scan the barcode with your Camera App to see images of this project.

www.bowenengineering.com



RESOURCEFUL. RESPONSIVE. RESULTS.